

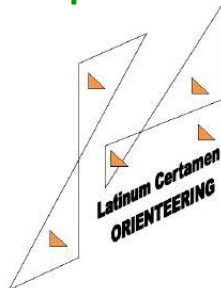


BULLETIN 2



#HOP2017

Highlands Open – 17th edition



#CPL2017

Latinum Certamen – 23rd edition



FEDERAZIONE
ITALIANA
SPORT
ORIENTAMENTO

#ItaCup2017

Italian Cup 2017 – 3rd & 4th stage

19th – 21st May 2017

Asiago Plateau

Turcio – Marostica – Monte Corno

GREETINGS

On behalf of A.S.D. Erebus Orientamento Vicenza, I am very glad to welcome all of you once more to the Asiago Plateau for the 17th edition of the Highlands Open. After a successful first edition earlier in 2008, Latin Countries national team will come back to Asiago to fight hard and give all their best in order to conquer the prestigious Latin Countries Cup. In addition, in the same races, orienteers from every Italian region will struggle for points for the final classification of the Italian Cup.

We could not honour this exceptional event better than by giving you the opportunity to discover a great variety of places: from the well-known Turcio technical forest, to the fast sprint town of Marostica and to the newly mapped Monte Corno, an extremely demanding area never used for orienteering before.

Everything is set now and the Highlands are only waiting for you!

I hope that our efforts will be appreciated and that you will enjoy your races at their best.

Good luck to all of you!

Renzo Donatello

A.S.D. Erebus Orientamento Vicenza President

TECHNICAL&ORGANIZING COMMITTEE

Chairman: Renzo Donatello

FISO Technical Advisor: Elvio Cereser

Race director: Attilio Giacomazzi

Course setters: Simone Gambini (1st stage), Cristian Bellotto (2nd & 3rd stage)

Controllers: Eugenio Trevisan, Michela Ronda, Brenno Pastò

Race office and Secretary: Alice Dal Bello

Cartography: Michele Cera

IT: Federico Bruni

Start referee: Massimo Sartori

Finish referee: Renzo Donatello

Speakers: Paolo Mutterle, Stefano Raus

PROGRAMME

Thursday 18th May

09.00-19.00 – Model Event – Turcio Est

Friday 19th May

09.00-13.00 – Model Event – Turcio Est

13.30– Meeting at Rifugio Turcio ([45.8484784,11.5470782](tel:45.8484784,11.5470782))

15.00– First start 1st stage MIDDLE DISTANCE – Turcio

Saturday 20th May

10.00– CPL Meeting at Meeting Room, Poli Museo della Grappa, Via Marconi 36, 36060, Schiavon (VI) ([45.701993,11.6436603](tel:45.701993,11.6436603))

13.00– Meeting at Piazza degli Scacchi, Marostica ([45.7456883,11.6530997](tel:45.7456883,11.6530997))

15.00– First start 2nd stage SPRINT DISTANCE – Marostica

18.00– CPL Opening ceremony (meeting at 17.45 in Castello Inferiore)

18.30– Price giving ceremony (Friday & Saturday races)

Sunday 21st May

08.30– Meeting at Baita Monte Corno ([45.8066198,11.5321534](tel:45.8066198,11.5321534))

10.00– First start 3rd stage LONG DISTANCE – Monte Corno

following– Prize giving ceremony

Race office and Secretary will be open every race day at the race arena:

1st stage Friday 19th May 2017

13.30-16.30 Turcio

2nd stage Saturday 20th May 2017

13.00-17.00 Marostica

3rd stage Sunday 21st May 2017

08.30-14.00 Monte Corno

ENTRIES

-FISO members can enter the race using their reserved area in the FISO website

-Foreign athletes can enter the race by sending an e-mail to: info@erebusvicenza.it indicating name, surname, class, SI-chip number

-For Latin Countries Cup purpose, every national team can enter up to 6 official team members for each race (3 men and 3 women) following the above mentioned procedure for foreign athletes; national teams can also enter other athletes, but they will not count for the Latin Countries Cup final classification

-Final entry deadline (for all classes except Beginners and Direct): **Sunday 14th May at 23.59**

#HOP2017

ENTRY FEES

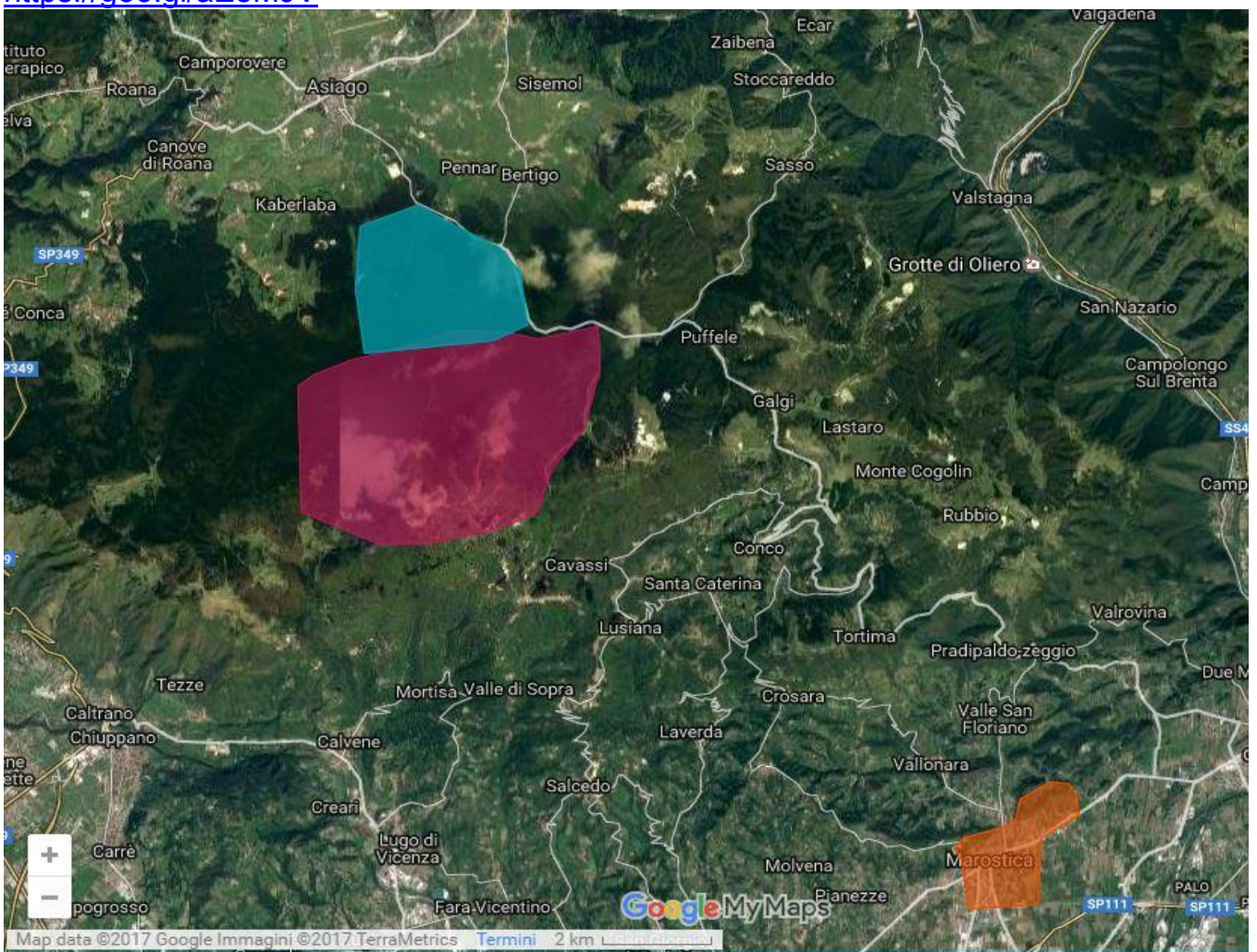
- 5€ for M/W 12, M/W14, M/W16, BEGINNERS
- 12€ for all other classes
- SI-chip renting: € 1,50 each race

-If you have not paid yet in advance by bank transfer, you can pay cash at the Race office

EMBARGOED AREAS

-You can check the embargoed areas at this link:

<https://goo.gl/aE8MJV>



LATINUM CERTAMEN-LATIN COUNTRIES CUP 2017 RULES

-Latin Countries Cup 2017 consist of 3 stages: MIDDLE DISTANCE (stage 1), SPRINT DISTANCE (stage 2) and LONG DISTANCE (stage 3)

-Valid classes for Latin Countries Cup are: MEN/WOMEN SENIOR; MEN/WOMEN JUNIOR (born in 1997 and earlier); MEN/WOMEN CADET (born in 1999 and earlier)

-Every nation competing can enter up to 6 official team members, 3 men and 3 women, 1 for each class

-A nation is classified when at least an athlete takes part in the race

-Classification is done considering ONLY official team members (excluding any other accompanying athlete); points will be assigned for each of the 3 races as follows (considering $n = n^{\circ}$ of national teams entered):

The 1st in each class will receive $n+1$ points

The 2nd in each class will receive $n-1$ points

The 3rd in each class will receive $n-2$ points

Then every runner will receive 1 point less than the previous till 1 point

Disqualified runners will NOT receive points

Example with 6 nations competing:

1st: 7 points 2nd: 5 points 3rd: 4 points

4th: 3 points 5th: 2 points 6th: 1 point

-In case of draws, classification will be determined by:

- n° of victories

- n° of 2nd places etc.

MODEL EVENT

-A model event will be organised and will be open on Thursday 18th (9:00-19:00) and Friday 19th (9:00-13:00)

-Parking & map collection point: Rifugio Turcio ([45.8484784,11.5470782](https://www.google.com/maps/place/45.8484784,11.5470782))

-Map: Turcio Est (excerpt from Friday's race map), scale 1:10.000, contour interval 5 m

-It consists of 8 control points, marked with flags, which can be found in any order

-If interested, we kindly ask you to send us an e-mail to info@erebusvicenza.it indicating the n° of copies you wish to purchase

CLASSES

Italian classes

STAGE 1 Turcio	STAGE 2 Marostica	STAGE 3 Monte Corno
M/W 12	M/W 12	M/W 12
M/W 14	M/W YOUNG (13-16)	M/W 14
M/W 16	M/W JUNIOR (17-20)	M/W 16
M/W 18	M/W ELITE	M/W 18
M/W 20	M/W MASTER 35 (35-44)	M/W 20
M/W ELITE	M/W MASTER 45 (45-54)	M/W ELITE
M/W 35	M/W MASTER 55 (55-64)	M/W 35
M/W 40	M/W MASTER 65 (above 65)	M/W 40
M/W 45	M/W B	M/W 45
M/W 50	Beginners	M/W 50
M/W 55	Direct	M/W 55
M/W 60		M/W 60
M/W 65		M/W 65
M/W 70		M/W 70
M/W 75		M/W 75
M/W A		M/W A
M/W B		M/W B
M/W C		M/W C
Beginners		Beginners
Direct		Direct

Latin Countries Cup classes

M/W SENIOR ⇔ SM/SF

M/W JUNIOR (born in 1997 and earlier) ⇔ JM/JF

M/W CADET (born in 1999 and earlier) ⇔ CM/CF

PUNCHING SYSTEM

-SPORTident punching and timing system will be used towards the entire event. At the control point you will find, together with the flag, a SI-unit to be punched and a backup pin punch to be used if SPORTident fails (in this case you must punch on the map).

-Athletes may either use their own SI-chip or rent it at €1,50 each day (you will also need to leave your ID as a caution). If you use a rented SI-chip, you must return it at the IT tent after completing your last race; failing to return the chip or missing it will result in a 30 € fine

START & FINISH PROCEDURE

-Athletes will be called by a start judge at the 1st pre-start box 4 minutes prior to their start time, we recommend you to be on time

-They will then go ahead to the -3 minutes box, in which it will be possible to CLEAR and CHECK the SI-chip

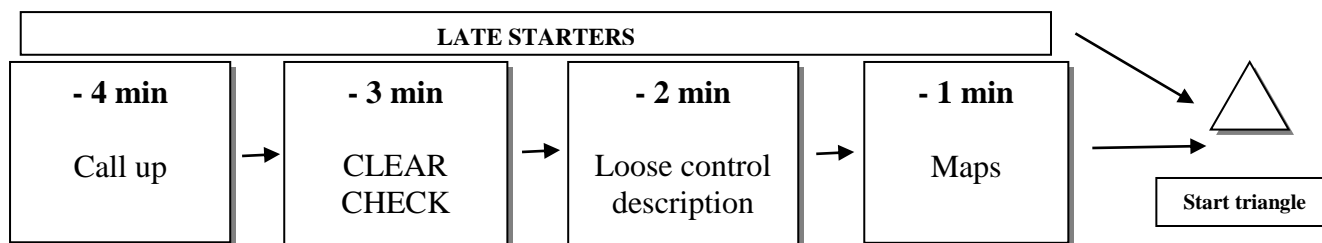
-Next, at the -2 minutes box, loose control descriptions will be available; a staff member will help you in case you need it

-Moving on to the -1 minute box, athletes will have to place in front of their class's map box without taking the map; a start judge will check that the correct procedure is followed by every athlete. Here, in case of bad weather and if you wish so, you can also cover your map with a plastic bag (maps will be printed on water-proof paper anyway).

Please note that Latin Countries Cup classes will have a separate map box, marked by a panel indicating the class in a light blue background

-The countdown starts at -5 seconds with 5 short beeps, followed by a longer beep which is the start signal: athletes will then be able to pick up their map and advance to the start triangle

-In case an athlete is late, they will have to follow a separate corridor and report it immediately to the start judges



-Approaching the finish line, every athlete should be ready to punch the SI FINISH unit; their finish time will be determined by the SI unit punch

-Then every athlete will have to move on immediately to the IT tent, just near the finish, to download the SI-chip; in case of mispunches, they will be given explanations of their faults.

EVERY SINGLE ATHLETE, even if intentioned to withdraw, MUST COME TO THE IT TENT TO DOWNLOAD THE SI-CHIP!!

KINDERGARTEN

A kindergarten service for children and toddlers will be available during the races on Saturday and Sunday.

ACCOMMODATION

Please contact the following association:

IAT Bassano del Grappa

Piazza Garibaldi 34

36061 Bassano del Grappa (VI)

e-mail: iat.bassano@comune.bassano.vi.it

there you will find more information and constantly updated offers

OFF-RACES: CULTURAL PROGRAMME

For Latin Countries Cup team members, a cultural programme based on 2 possible offers will be available during the off-races time. Further information will be published in a separate flyer, which will be available online at the event website and will be printed and handed out after the team registration at the Race Office

DETAILS ABOUT THE RACES

1st STAGE – 19th May 2017

1st STAGE LATIN COUNTRIES CUP – MIDDLE DISTANCE

TURCIO

Programme

09.00-13.00 – Model Event – Turcio Est

13.30– Meeting at Rifugio Turcio ([45.8484784,11.5470782](https://www.google.com/maps/place/45.8484784,11.5470782))

15.00– First start 1st stage MIDDLE DISTANCE – Turcio

Race map

Turcio-Asiago - Scale: 1:10.000 - Contour interval: 5mt

First mapped: 2010 - Last update: May 2017 - Homologation FISO n° 730

Mapped by Sergey Skripko & Sergey Pozdeev following ISOM 2000

Courses and classes

Class	Course length (km)	Climb (m)	N° of controls
M 12	1,9	45	9
M 14	2,6	55	12
M 16	3,5	85	12
M 18-CM	3,6	105	14
M 20-JM	3,6	130	12
M ELITE-SM	4,7	150	15
M A	3,6	130	12
M B	3,5	85	12
M C	2,6	55	12
M 35	3,6	130	12
M 40	3,6	130	12
M 45	3,6	105	14
M 50	3,6	105	14
M 55	3,5	85	12
M 60	3,5	85	12
M 65	3,4	80	12
M 70	3,4	80	12
M 75	3,4	80	12
W 12	1,9	45	9
W 14	2,6	55	12
W 16	3,4	80	12
W 18-CF	3,5	85	12
W 20-JF	3,6	105	14
W ELITE-SF	3,6	130	12
W A	3,6	105	14
W B	3,4	80	12
W C	2,6	55	12
W 35	3,6	105	14
W 40	3,6	105	14
W 45	3,5	85	12
W 50	3,5	85	12
W 55	3,4	80	12
W 60	3,4	80	12
W 65	2,6	55	12
W 70	2,6	55	12
W 75	2,6	55	12
Beginners	1,6	30	7
Direct	3,5	85	12

Terrain

Classical karst terrain, rich in rocky details, depressions and pits; not very hilly in general, with some moderately steep slopes for the longer courses. Runability is generally quite good, as well as visibility, except in some limited areas where the navigation speed may be reduced

Special notes

-As previously communicated, some classes will be merged according to the n° of athletes entered; information about the precise classes affected will be published on www.erebusvicenza.it/highlandsopen after the entry deadline expires. These merges will not affect Latin Countries Cup classes

-Parking available near the Arena and in front of Rifugio Turcio

-The Start area is 10 minutes walk from the Arena

-It is strictly forbidden to cross the northern road during the race (it represents the northern border of the map)

-In a limited area in the north-eastern part of the map, deforestation has been performed very recently; pay attention to the branches on the ground that can sensibly reduce the navigation speed. The area will not be marked on the map, but you will be able to see its extension at the Start area

-There is a great variety of rocky pits, few of them very deep; the most dangerous will be taped on their perimeter in order to make them immediately recognizable



2nd STAGE – 20th May 2017

2nd STAGE LATIN COUNTRIES CUP – SPRINT

3rd stage Italian Cup – SPRINT

3rd stage “SUUNTO Sprint Race Tour”

MAROSTICA

Programme

13.00– Meeting at Piazza degli Scacchi, Marostica ([45.7456883,11.6530997](https://www.google.com/maps/place/45.7456883,11.6530997))

15.00– First start 2nd stage SPRINT DISTANCE – Marostica

18.00– CPL Opening ceremony (meeting at 17.45 in Castello Inferiore)

18.30– Price giving ceremony (Friday & Saturday races)

Race map

Marostica - Scale: 1:4.000 - Contour interval: 2,5mt

Renewed map!! - Homologation FISO n° 1035

Mapped by Michele Cera following ISSOM 2007

Courses and classes

Class	Course length* (km)	Climb (m)	N° of controls
M 12	2,0	0	13
M YOUNG	3,1	10	18
M JUNIOR	3,5	30	21
M ELITE	3,7	35	22
M MASTER 35	3,1	15	16
M MASTER 45	3,1	15	16
M MASTER 55	3,0	15	16
M MASTER 65	2,2	10	12
M B	3,0	15	16
CM	3,5	30	21
JM	3,5	30	21
SM	3,7	35	22
W 12	2,0	0	13
W YOUNG	2,6	10	15
W JUNIOR	3,0	15	16
W ELITE	3,0	30	20
W MASTER 35	2,6	10	15
W MASTER 45	2,2	10	12
W MASTER 55	2,1	5	12
W MASTER 65	2,1	5	12
W B	2,1	5	12
CF	3,0	15	16
JF	3,0	15	16
SF	3,0	30	20
Beginners	2,0	0	13
Direct	3,1	10	18

*calculated on the best route choices

Terrain

Very fast urban terrain, alternated to open parks with excellent visibility; a short part of the race will develop inside the historical town centre. Moderate climb only for the longer courses

Special notes

-During the race, there will be no road closures; we recommend you to pay extremely attention

-Car parking available south-west of the Arena ([45.744182,11.653023](https://www.google.com/maps/place/45.744182,11.653023)); you will have to follow the mandatory route indicated in the image below



-For campers & vans, we suggest this alternative parking

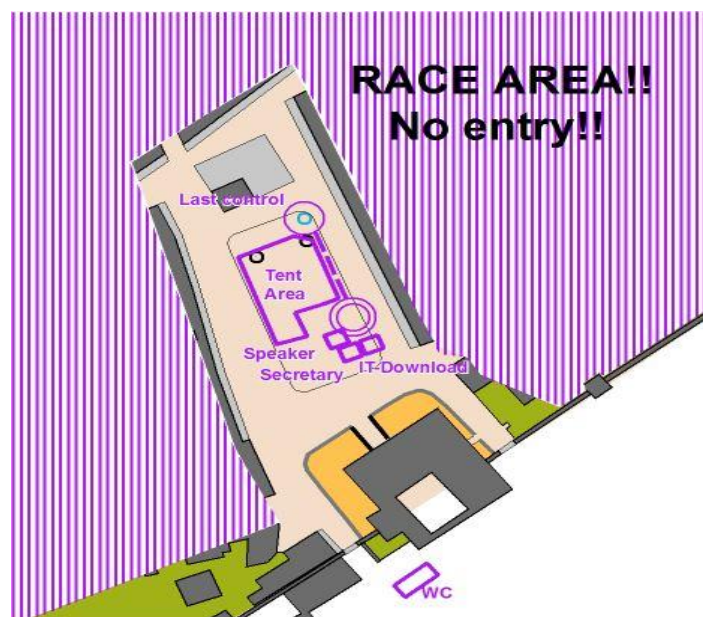
([45.7430541,11.6578055](https://www.google.com/maps/place/45.7430541,11.6578055))

-The Start area is 20 minutes walk from the Arena; on the way to the Start area there will be a manned road crossing, pay extremely attention and follow the instructions given by the marshals

-As you can see from the image, out-of-bound race area is all around the Arena in Piazza degli Scacchi; it is forbidden to enter that area before your starting time;

athletes caught inside the area before their starting time will be disqualified

-After the race, the CPL Opening Ceremony will take place: national team members shall be in front of Castello Inferiore by 17:45; the National Teams Parade will then start at 18:00 from Castello Inferiore to Piazza degli Scacchi, where the Prize giving Ceremony will follow (about 18:30; prizes will be given for both 1st and 2nd stage)



3rd STAGE – 21st May 2017

3rd STAGE LATIN COUNTRIES CUP – LONG DISTANCE

4th stage Italian Cup – LONG DISTANCE

MONTE CORNO

Programme

08.30– Meeting at Baita Monte Corno ([45.8066198,11.5321534](https://www.google.com/maps/place/45.8066198,11.5321534))

10.00– First start 3rd stage LONG DISTANCE – Monte Corno

following– Prize giving ceremony

Race map

Monte Corno - Scale: 1:15.000/1:10.000/1:7500

Contour interval: 5mt

NEW MAP!!! - Homologation FISO n° 1034

Mapped by Marcello Pradel following ISOM 2000

Courses and classes

Class	Course length (km)	Climb (m)	N° of controls
M 12	2,3	70	9
M 14	3,2	100	14
M 16	4,8	220	17
M 18-CM	5,9	280	20
M 20-JM	7,7	365	24
M ELITE-SM	10,6	520	31
M A	6,6	320	21
M B	4,8	220	17
M C	3,2	100	14
M 35	8,0	395	24
M 40	6,6	320	21
M 45	5,8	270	17
M 50	5,0	250	18
M 55	4,8	245	15
M 60	4,2	220	15
M 65	3,3	160	14
M 70	3,3	160	14
M 75	1,9	60	9
W 12	2,3	70	9
W 14	3,0	80	11
W 16	4,5	205	16
W 18-CF	5,0	250	18
W 20-JF	5,8	270	17
W ELITE-SF	8,0	395	24
W A	4,5	225	16
W B	4,5	205	16
W C	3,0	80	11
W 35	4,8	245	15
W 40	4,5	225	16
W 45	3,3	160	14
W 50	3,1	140	11
W 55	3,1	140	11
W 60	2,4	85	9
W 65	2,4	85	9
W 70	1,9	60	9
W 75	1,9	60	9
Beginners	2,3	70	9
Direct	4,2	220	15

Terrain

Karst terrain, moderately rich in rocky details; very good visibility; quite hilly, moderate to steep slopes, especially for the longer courses. Runability varies from good to fairly good

Special notes

-The map scale for this race will be as follows:

- 1:15.000 for classes M/W ELITE, M/W A, M/W 20 & M/W 18 and for CPL classes
- 1:10.000 for all other classes except Beginners and M/W 12
- 1:7.500 for classes Beginners & M/W 12

-There will be a map change for classes M/W ELITE, M 20 & M 35 (and CPL classes SM, SF & JM); for these classes, the “Dalarna” method will be used:

athletes will be given a two-sided map in a plastic bag (it is forbidden to leave the plastic bag in the forest) and, after punching the last control of the 1st part, they will turn the map over and continue to the 2nd part (the start triangle corresponds to the last control of the 1st part)

-Parking available very close to the Arena and to Baita Monte Corno

-The Start area is 10 minutes walk from the Arena

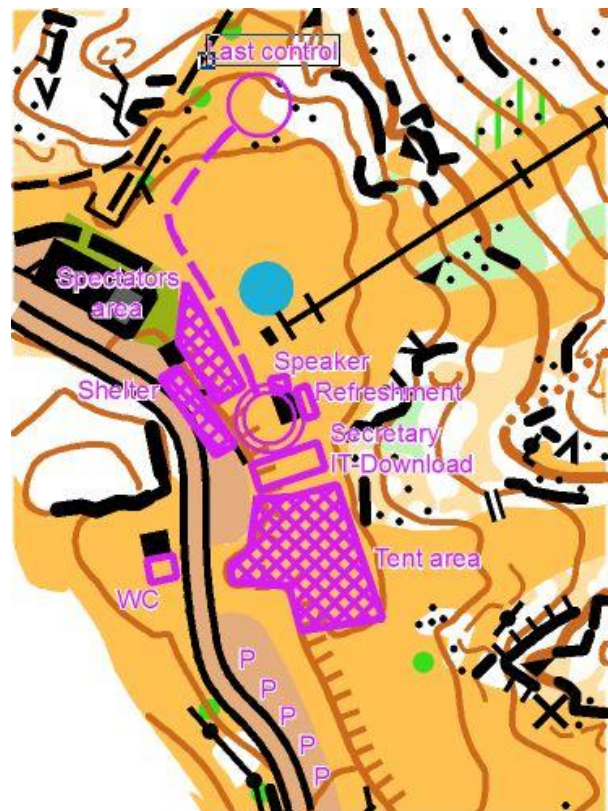
-In addition to the refreshment point at the Arena, 4 self-service refreshment points will be available in the forest, with bottles of water and plastic cups

-You can occasionally encounter some rocky pits on the ground; the deepest and most dangerous will be taped on their perimeter in order to make them immediately recognizable

-After the race, it will be possible to have lunch at Baita Monte Corno at the following conventioned prices:

- Main course menu (*choose between a selection of main courses*) 12 €
- Side dish menu (*choose between a selection of side dishes*) 15 €
- Complete menu (*main course + side dish*) 25 €

You must book your meal in advance, directly at Baita Monte Corno, by 10:00 on Sunday!



ARE YOU READY TO PLAY CHESS IN #HOP2017??



We are waiting for you!!